

CATALOG
**20
20**

WE DO
SERIOUS
BUSINESS


www.asa-fc.com





About Us
Our Services
Curtain Wall and Aluminium
Spider system
Balustrades
Curtain Glass
Interior
Decorations

CONTENTS



ABOUT US

About ASA

ASA was established in Beirut, Lebanon in the year 2000. The company was back then involved in closing some of the most prestigious projects in the area.

The main business was concentrated on Aluminum, Glazing, and Stainless Steel works.

Today ASA stands among the highest levels of Highrise Structural Glazing and Aluminum Installation.

ASA Aluminum Facade Contractors registered under the commercial registration number 1598588, with more than Twenty years of experience in the domain of Structural Glazing, Aluminum, Bullet Proof and Stainless Steel.

ASA has expanded its territory to Africa, Jordan and other Arab countries, where then again ASA has proven itself in many highrise buildings.

The company team has so far proven its professionalism in undertaking a great number of projects in the Middle East and the Gulf.



OUR SERVICES

ASA delivers high quality outcome taking into consideration the International Standards and incorporating the latest innovations in Aluminum industry. We execute large projects in Curatin Wall, Composite Panels, Skylight, Spider Systems, Thermal Break Profiles, Steel and Stainless Steel Structures.

This was achieved by including the latest innovations, great engineers and architects using advanced products and well trained quality staff, and also by gaining the trust and support of our clients and the consulting companies.

We do serious, honest and effective business to achieve high quality and recognition, we show as well positive attitude and team work.

We are dedicated to deliver high standards in work, high quality material and working with the most reliable manufactures and suppliers. Always researching for new aluminum techniques and systems

Dedicated engineers and staff to support our clients with all technical specifications, structural plans, calculations and shodrawings, as well as experienced supervisors and highly trained assembling and installing team workors.

Board Members

Nicolas Kahwaji
Georges Kahwaji CEO





CURTAIN WALL **AND ALUMINIUM**



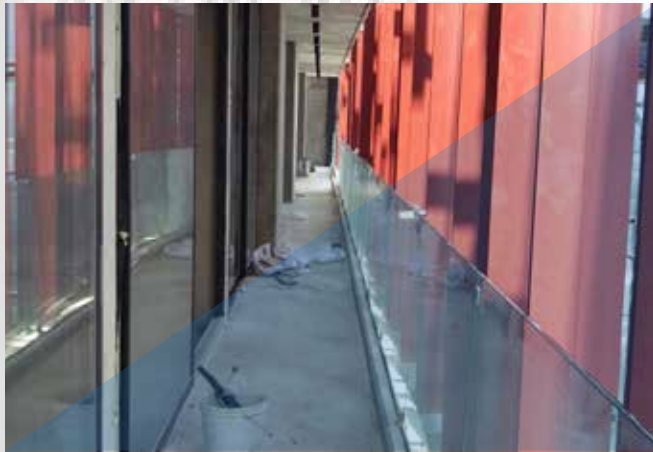
The background is a solid blue color with several large, overlapping geometric shapes in a darker shade of blue. These shapes are primarily triangles and trapezoids, creating a dynamic, abstract composition. The shapes are positioned on the right side of the frame, extending towards the center.

QUALITY
SERVICE
COMMITMENT
SUCCESS

LIV LOFTS

Aluminium Technical GxFx Reinforced
Aluminium Louvers Sun Breaker Custom

Consultant : Bernard Khoury Architects



LILA'S RESIDENCE

Aluminium GxiFixi Thermal Break
Consultant : IDEA Architects



KASLIK 1053

Aluminium Technical GxFx Reinforced
Aluminium Curtain Wall Vec
Consultant : Sako Azadian Architects



FAQRA 1800

Aluminium GxiFxi

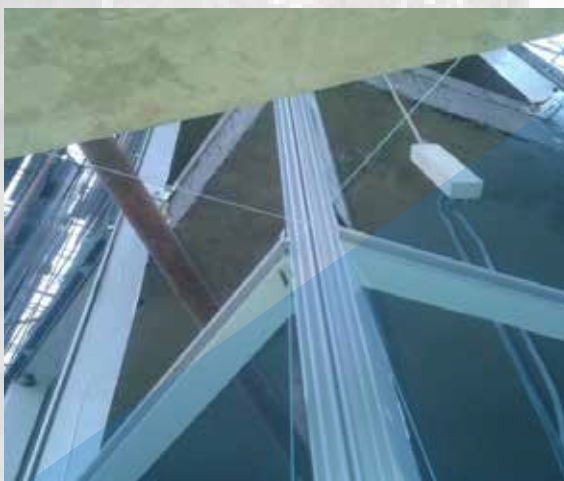
Consultant : Bernard Khoury Architects



JAL EL DIB

Aluminium Technal MXV SG
U- insert HD Grey Guardian.
VEC System

Consultant : Micheal Akl office



SAHEL ALMA

SEA VIEW HILLS

Aluminium Tchnal GxFx
Curtain wall Mx. Back printed glass

Consultant : Pierre Ghanimeh Engineer



St Nicolas 131

Aluminium Technal Mx SG
U-insert SK 176 Doble Silver Saint Gobain
VEC System
ACP Mechanical Fixation
Steel Structural Design Skylight
Bullet Proof Glazing

Consultant : AM Architects / Antoine Khalil



AL MAJLISS AL A'ALA (HAZMIYEH)

Lines Engineering {Consulting and Contracting}



Technal MX Curtain Wall

Tempered Reflective Coated

Double Glazing +Low E

Aluminium Composite Panel

Technal MVv Curtain Wall

Adapted VEC
Tempered Redflective Coated
Double Glazing
15mm Spider System
4 mm Aluminium Composite Panel

Caopy System

16mm Tempered Laminated Float Glass

"ROOFTOP' Royal Plaza Hotel (Beirut)



BENTA TRADING (Dbayeh)



Building 41
(American University Of Beirut)



JAFFET LIBRARY
(American University of Beirut)



“ACHRAFIEH 402”
(Beirut)

Aluminium System Sidem 2000



Technal GBFB

Double Glazing



22 mm Clear Float Double Glazed
Monoblock 4.5 cm Motorized

**Milano Square
(Kaslik)**



10 mm Clear Tempered Glass

**BISCO Center
(Tayouneh)**



13 mm Clear Tempered Laminated Glass

**“AZAR RESIDENTIAL”
(Haret Sakher)**



**Ramlit El Bayda
(Beirut)**



Technal GXFX

Double Glazing 6/12/6 mm

**“GARDEN 1111”
(Byblos)**



Aluminium System Sidem 2000

22 mm Clear Float Double Glazed
Monoblock 4.5 cm Motorized



MONOT 627



Aluminium Technal GxFx Sliding system

Technal Mxv Curtain Wall Vec

**“BAKHOS BUSINESS CENTER”
(Beirut)**



Technal MC CurtainWall

Aluminium Sliding System:
Technal GFX system

Aluminum curtainwall:
technal MVV system

28mm Clear Tempered Double Glazed

22mm Clear Float Double Glazed

Moboblock 4.5 cm Motorized

**“FERRI CENTER”
(Tripoli)**



Technal MC Curtainwall

Aluminium Curtainwall
Tchnal MX system

22 mm Reflective Tempered Double Glazing

22 mm Clear Float Double Glazing

Aluminium Sidem 2000

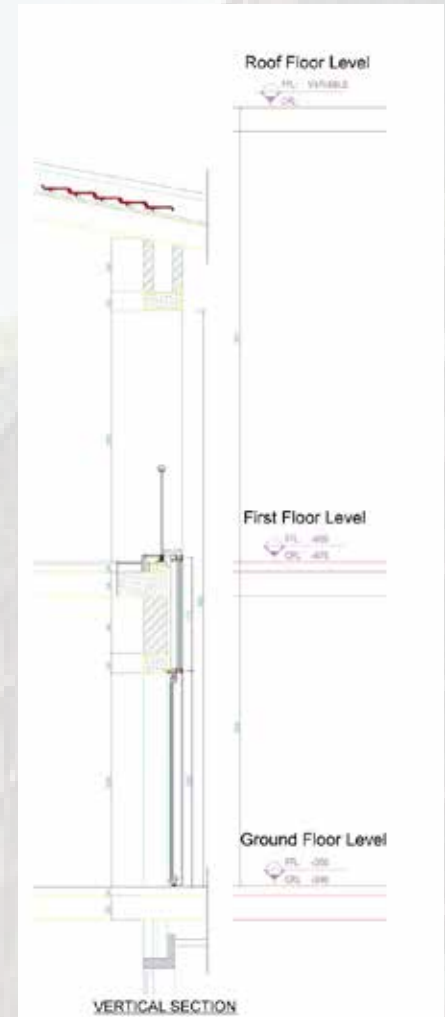
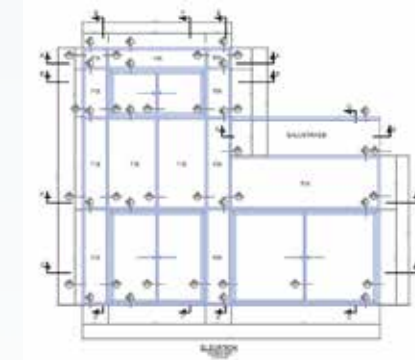
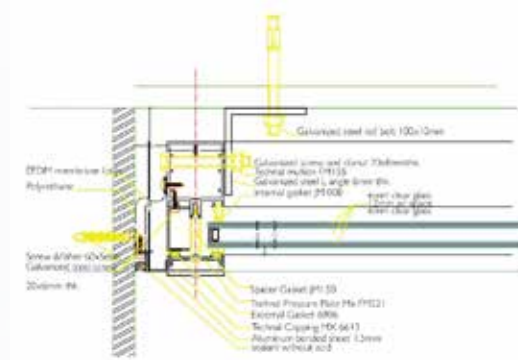
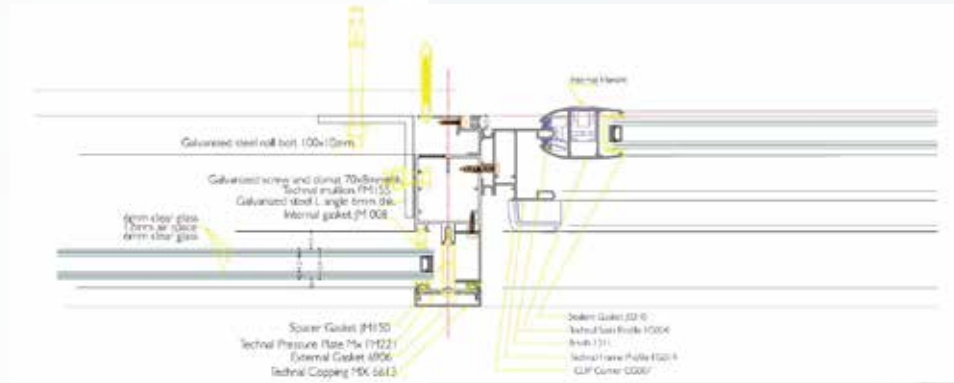
4 mm Aluminium Comp Pannels ALUBOND

**Aluminium System:
Sidem 2000**



22 mm Clear Float Double Glazed
Monoblock 45 cm Motorized

“LES DUNES DE FAKRA” (FAKRA)



Technal MC Curtainwall

Aluminium Sliding System:
Technal GXFX system

Aluminium CurtainWall:
Technal MX system

28 mm Clear Tempered Double Glazed

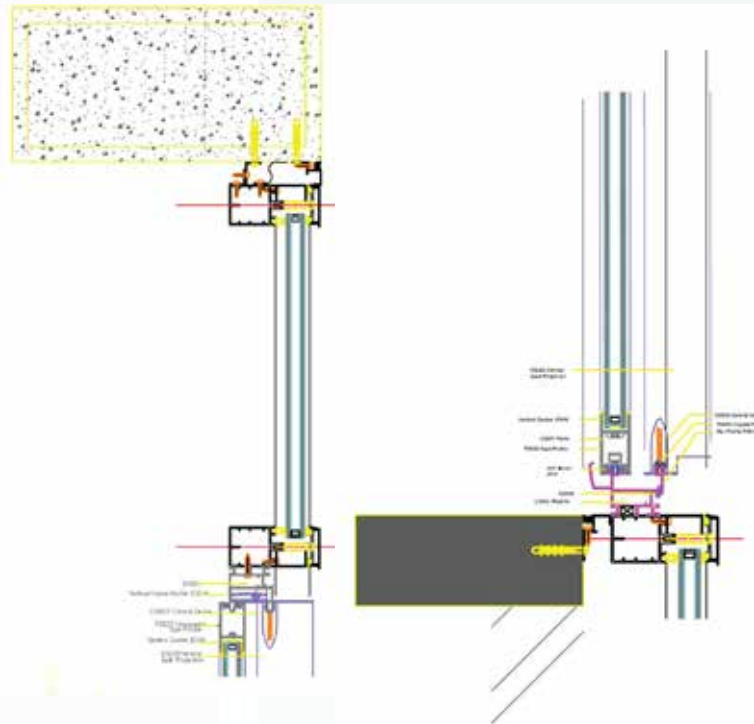
Balustrade: 22 mm Clear Tempered
Laminated Glass

4 mm Aluminium Composite Panel

Consultant

MR GROUP

**“DUROY RAOUCHE HOTEL”
(Raouche)**



Curtainwall MVv Vec System

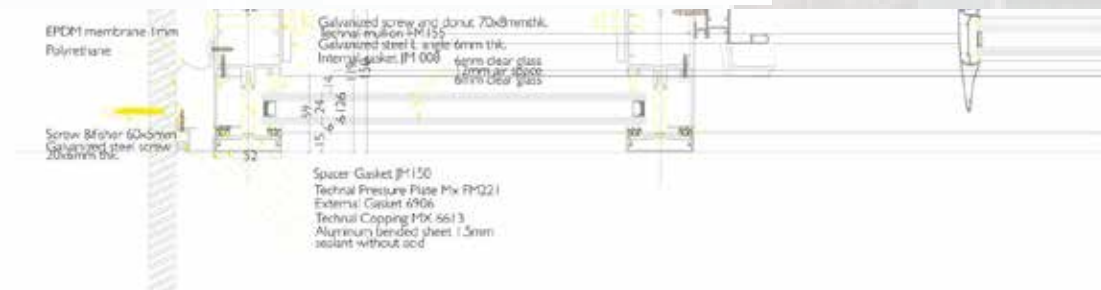
Aluminium Sliding System:
Technal gxfx system

Aluminium CurtainWall:
MVv Vec system

28 mm Clear Tempered Double Glazed

Balustrades: 22 Clear Tempered Laminated Glass

4mm Aluminium Composite panel



“HALAT 1954” (Halat)



Aluminium System Sidem 2000

22 mm Clear Float Double Glazed

Monoblock 4.5 cm Motorized

“VILLAS HALAT 334’ (Halat)



Technal MC CurtainWall

Aluminium Sliding System:
Technal GXFX System

Aluminium CurtainWall:
Technal MX system

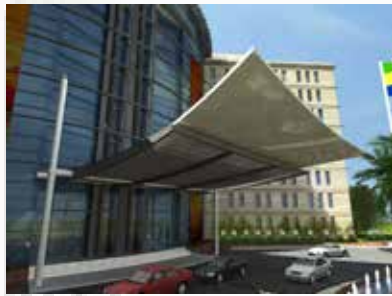
28 mm Clear tempered
Double Glazed

Balustrades: 22 mm Clear
Tempered Laminated Glass

BECHARA EL KHOURY



**COTTON CLUB
AFRICA GABON**



Technal MVv CurtainWall

Aluminium CurtainWall:
Technal MVv system

6.6.2 mm Clear tempered Laminated

Technal MVv CurtainWall

Aluminium Composite Panel 4 mm

Technal MX SG CurtainWall

Aluminium CurtainWall:
Technal MX system

6.6.2 mm Clear tempered Laminated

SWC NKOK-AFRICA GABON



Aluminum Folda series

Aluminium Folda series including
Motorize rolling shutters.

MARINGA-AFRICA GABON



GHAZIR 3298 BADAWI GROUP



Aluminium Curtain Wall MV
Aluminium composite funels Mechanical Fixations

RABWEH



Manar University Of Tripoli



HAZMIEH 4422



La Créole ANTELIAS



ABDEL WAHAB



Aluminum Technal GX FX

Motorize rolling shutters.

steel balustrade
aluminum composite panels

Consultant

CAPSTONE





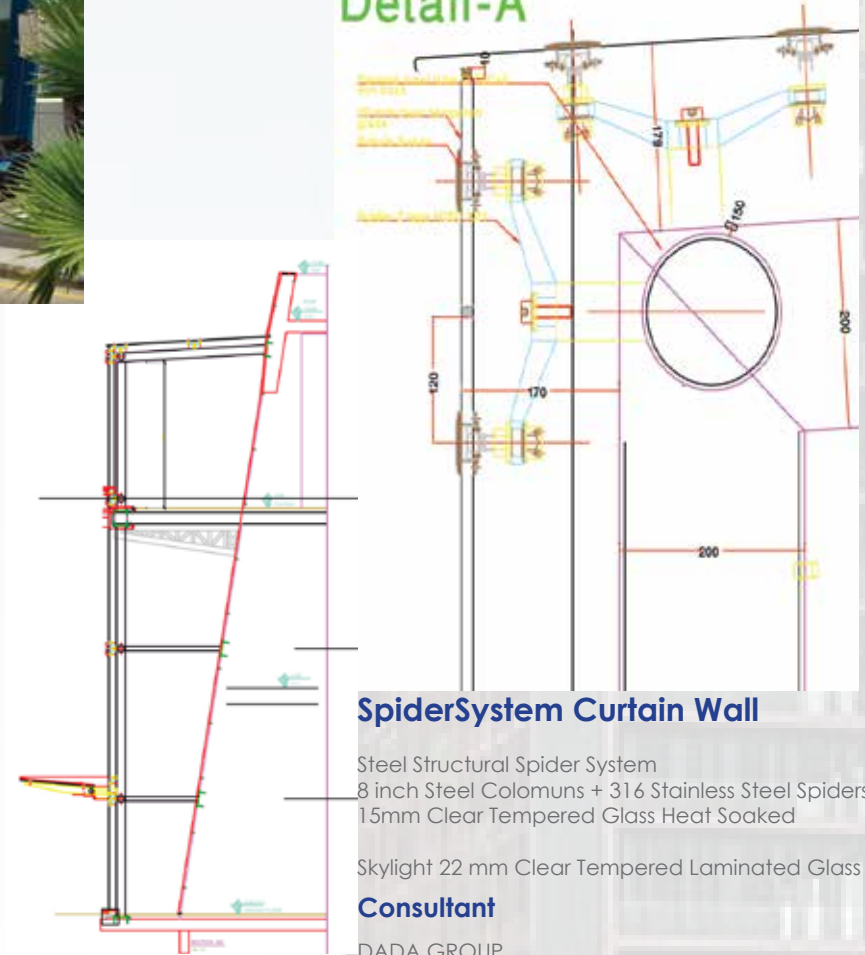
SPIDER SYSTEM



**“CENTERPOINT”
Saida Mall**

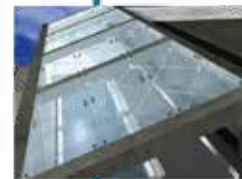
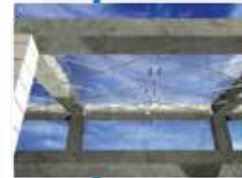
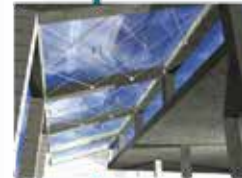


Detail-A



“HAWA RESIDENCE “ (SAFRA)

Kahwaji Constructing and Contracting



SKYLIGHT AND SPIDER SYSTEM

Structural Glazing 10.10.4/25 air space /
8.8.4 Low E.
Stainless Steel Spider System Grade 316
including Tension rod tenders.

Aluminum Technal GXFX Reinforced
Double Glazed.
6mm / 12mm air space 6mm.

Contractor
kahwaji construction co

**“HAWA RESIDENCE “
(SAFRA)**

**“BUSINESS CENTER”
(SIN EL FIL)**

About Rahal Contracting and Constructing



12 mm Tempered Float Glass

Spider System + Fins

Structural Glazing 15mm Tempered
Clear Glazed.
Stainless Steel Spider Grade 316 including Fin
Glazing System.

“AVENUE MALL” (Amman)



Aluminum Curtain Wall System

Skylight 32 mm Tempered Laminated Clear Glass

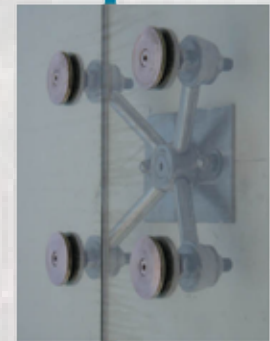
Balustrades: 15 mm Clear Tempered Glass



“HADDAD RESIDENTIAL AREA” (Alley)

Al Handasa Constructing and Contracting

42 mm Tempered Laminated Float Double Glazed
Spider System + Tension Rods





BALUSTRADES



HAWA RESIDENCE (SAFRA)

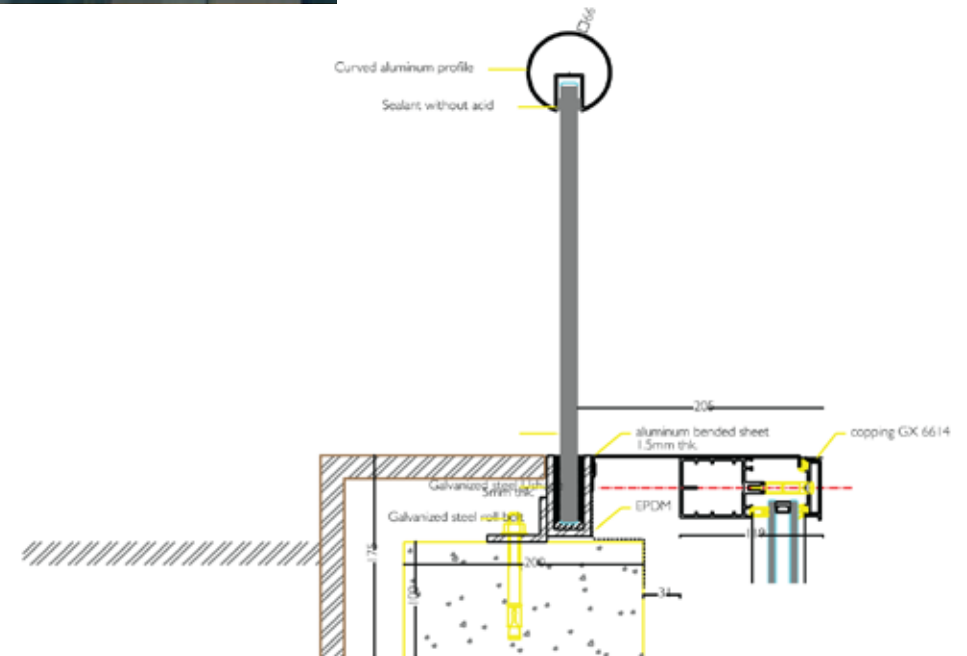
Kahwaji(KCC) Construction and Contracting

Balustrade: 16 mm Tempered Laminated Float
Glass + Stainless Steel Handrail



Balustrade: 16 mm Tempered Laminated Float
Glass + Aluminum Handrail

16.8 mm Tempered Laminated Clear Glass



Pain D'or (Amyoun)

KARAM ENGINEERING



Balustrade: 15 mm Tempered Glass + Stainless Steel Handrail.



Balustrade: 12 mm Tempered Glass + Stainless Steel Handrail.

Darazi Residence (Amyoun)

KARAM Engineering



Stainless Steel Grade 316

Balustrade : 15 mm Tempered Glass
+ Aluminum Handrail.



Balustrade : 15 mm Tempered Glass
+ Aluminum Handrail.
Galvanized Steel U-Channel + Grout





CURTAIN **GLASS**

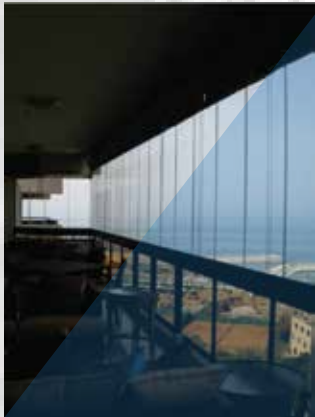


**“RESIDENCE”
(Ramli el Bayda)**

10 mm Tempered Float Glass

ALUMINUM FOLDING SYSTEM

6mm / 6mm air space / 6mm Tempered Float Glass



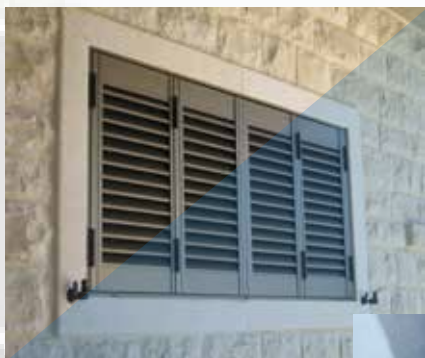
**“RESIDENTIAL AREA”
(Kfarehbab)**

10 MM Tempered Float Glass



“AMYOUN”

ALUMINUM PERGOLA - LOUVERS - BULLET-PROOF



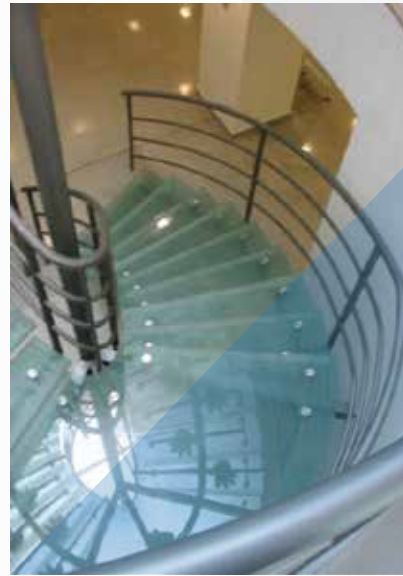
CANOPY AQUA





INTERIOR





Mirrors, Showers, Interior Decoration...



Our Resources

we believe that our work is our strongest asset, and consequently we provide our clients with the best resources this field has to offer.

Our Aim

is to deliver the best quality in our field, aluminum and glass, to build brands and push sales at the best competing prices in the market.

Our Discipline

our team is made up of specialized groups in the field of aluminum and glass, highly informed and trained to give the best.

Our Work

we strive to deliver the best quality in the market according to specifications.

GEORGES N.KAHWAJI
CEO / Architect



WE DO
SERIOUS
BUSINESS



+961 3 87 000 8 | +961 70 87 000 8
info@asa-fc.com | www.asa-fc.com

Tabaris | Tabarja, LEBANON